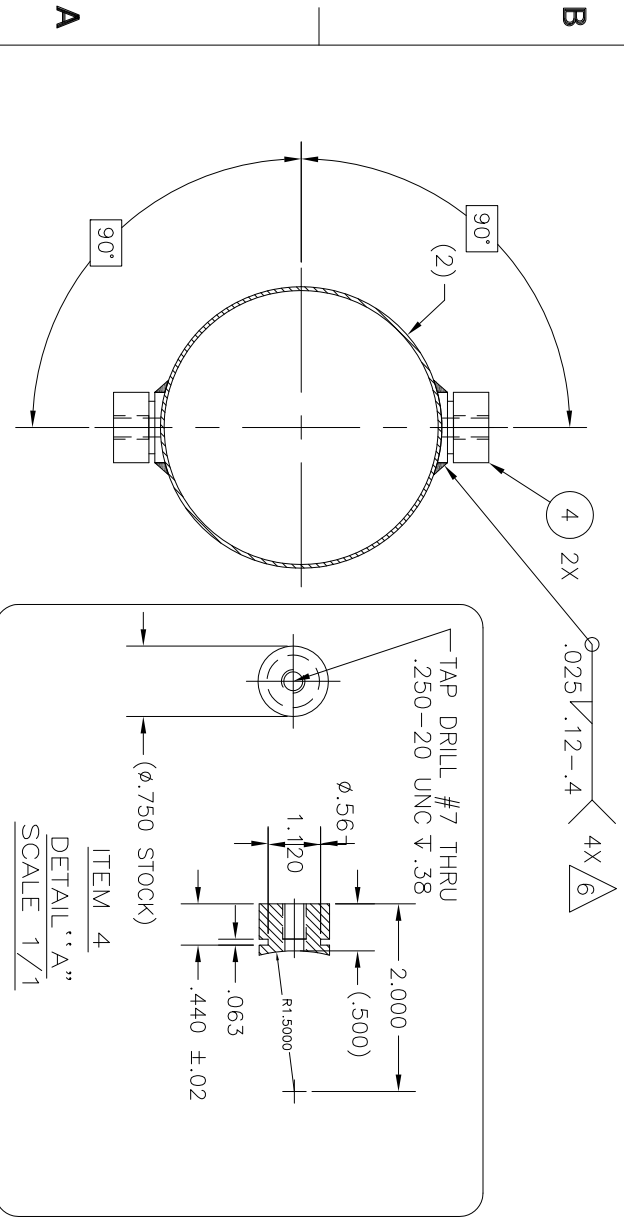
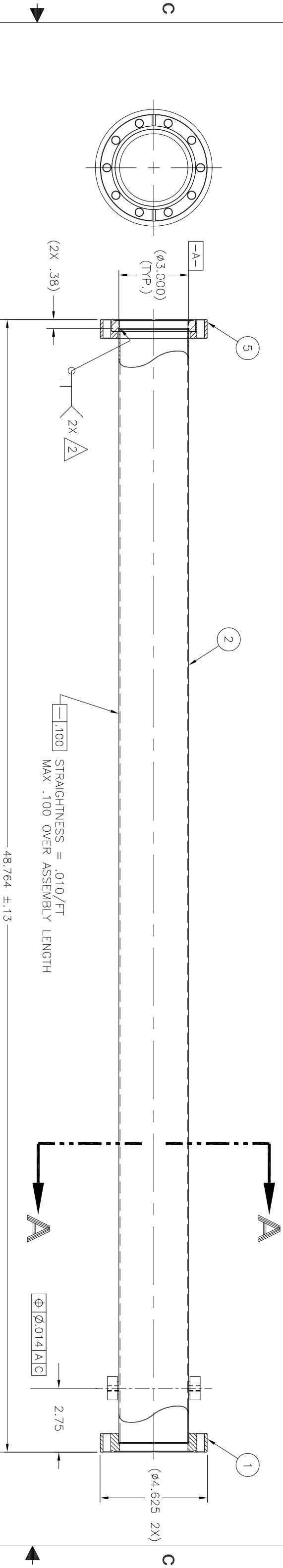


REVISION APPROVALS						
REV/ECN NO.	DESCRIPTION	DATE	BY	CHK	DES	SUPV
A	INITIAL RELEASE	3/4/12	jos			

NOTES:

1. BEAMPIPE ASSEMBLY & ALL SUB-ASSEMBLIES, WELDED JOINTS, AND BRAZE JOINTS TO CONFORM TO SPECIFICATION C-AD 1119.
2. BEAM TUBE ASSEMBLIES, INCLUDING ALL WELDS & BRAZE JOINTS SHALL BE LEAK TIGHT EQUAL TO OR LESS THAN 1×10^{-10} STD cc He/Sec.
3. ASSEMBLY TO BE BAKEABLE TO 250°C. ASSEMBLY I.D. TO BE NEG COATED AND BAKEABLE TO 250°C; B.N.L. RESPONSIBLE FOR INTERIOR COATING.
4. PERPENDICULARITY IS TYPICAL FOR BOTH ENDS FOR THE LAST 12" OF TUBE ENDS.
5. TAG IN ACCORDANCE WITH MIL-STD-130.
6. DEPTH OF PENETRATION LIMITED. DO NOT MELT THROUGH ITEM 2.



QTY	ITEM NO.	PART NUMBER	DESCRIPTION	REMARKS
1	5		FLANGE, ROTATABLE, phi 4.625 (OR EQUIV.) ALUMINUM(6061-T6) TO STAINLESS STEEL(316L) ATLAS TECH INC, MUST BE DIMENSIONALLY THE SAME AS CONFLAT SST FLANGE	
2	4		ALUMINUM, ROUND, 6061-T6, phi .75 STOCK	SEE DETAIL "A"
1	2		ALUMINUM, TUBE, 2219-T31, phi 3.000 O.D. X .049 +/- .005 WALL THK.	
1	1		FLANGE, NON-ROTATABLE, phi 4.625 (OR EQUIV.) ALUMINUM(6061-T6) TO STAINLESS STEEL(316L) ATLAS TECH INC, MUST BE DIMENSIONALLY THE SAME AS CONFLAT SST FLANGE	

BILL OF MATERIALS

QTY	ITEM NO.	PART NUMBER	DESCRIPTION	REMARKS
1	1		ALUMINUM, TUBE, 2219-T31, phi 3.000 O.D. X .049 +/- .005 WALL THK.	
1	2		FLANGE, NON-ROTATABLE, phi 4.625 (OR EQUIV.) ALUMINUM(6061-T6) TO STAINLESS STEEL(316L) ATLAS TECH INC, MUST BE DIMENSIONALLY THE SAME AS CONFLAT SST FLANGE	

PRELIMINARY UNCONTROLLED DOCUMENT FOR REFERENCE ONLY

INTERPRET IN GENERAL ACCORDANCE WITH ANSI/ASME Y14.5M-1994	DRAWN BY J.A.Schneblin	DATE 3/8/11	TITLE COLLIDER-ACCELERATOR DEPARTMENT BROOKHAVEN NATIONAL LABORATORY UPTON, N.Y. 11973
UNLESS OTHERWISE SPECIFIED DIMENSIONS ARE IN INCHES DECIMAL TOLERANCES .XX ± .010 .XXX ± .005 ANGULAR TOLERANCE ± 1°	CHECKED BY		STAR PROJECT VACUUM SYSTEM WEST phi 3" BEAMPIPE
44035024 USED ON DRAWING NO. QTY. PER ASSY. 1	DESIGN ENGINEER		DRAWING NUMBER: 44035020
125 FINISH BREAK SHARP EDGES MAX. 0.3 MIN. 0.15	APPROVAL		REV. A