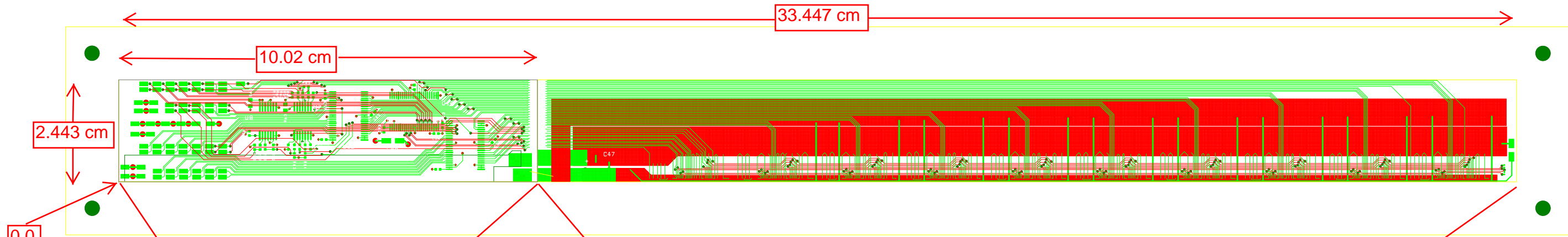


STAR PXL Detector
 Ultimate ladder cable prototype
 Draft single power version



driver section
 4 layer with copper traces
 TOP, PWR, GND, BOT
 adhered to the tab of kapton
 coming from the sensor section

Sensor section
 2 layer with Cu (later Al) traces.
 TOP, BOT
 wire bonded across gap to the buffer section

The diced size of Ultimate is 2.024 x 2.273 cm
 The corner of sensor # 1 is located at 12.692, 0.163
 This design has the following characteristics:
 1. Common power routing for VDDA, VDDD for sensors.
 2. Soldered wires to carry signals and power to/from cable.
 3. Wire bond connections between cable types.