

Pixel Survey - Update

Problem:

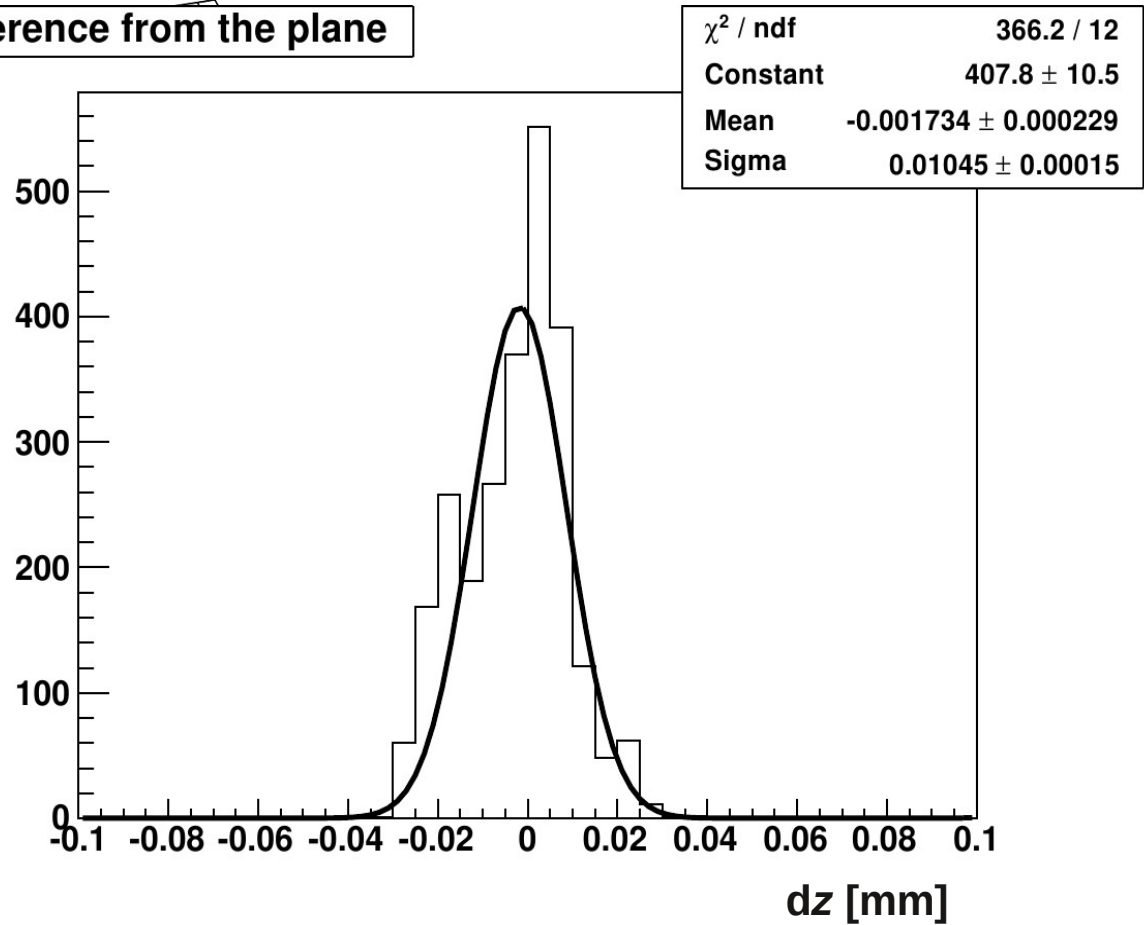
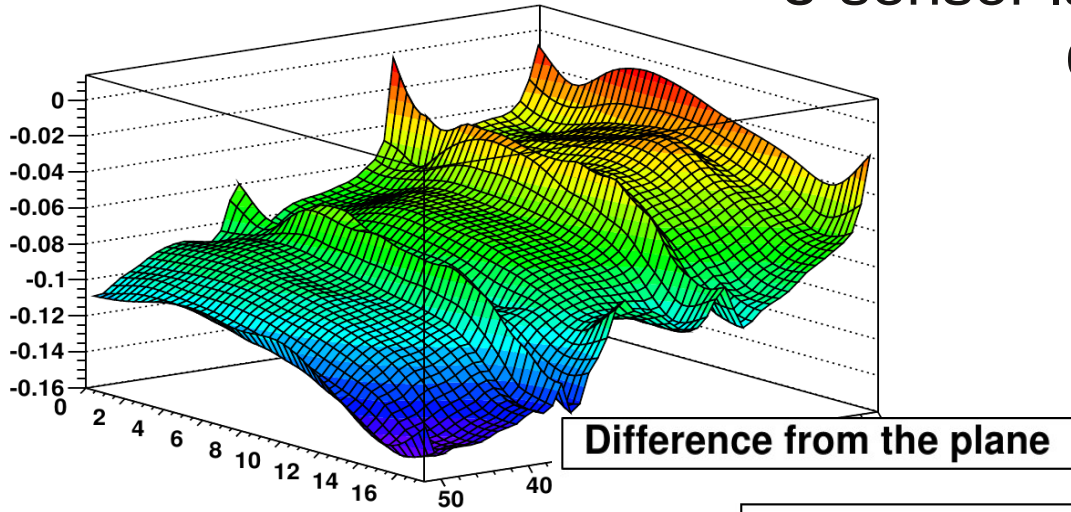
- Feature finder tool cannot be used for repeated measurements => features have to be measured manually => a volunteer needed
- Carl Haber: they used an old version of MeasureMind which contained a “bug” (steps were copied with relative coordinates to preceding steps) => this bug was “fixed” in MeasureMind3D

Solution:

- We can measure a few points around the feature and create the $z=0$ plane \Rightarrow the z coordinate of the feature ~ 0 .
- Repeated feature-finding steps will be performed in the $z=0$ height.
- If we repeat/copy all aforementioned steps, it works fine!

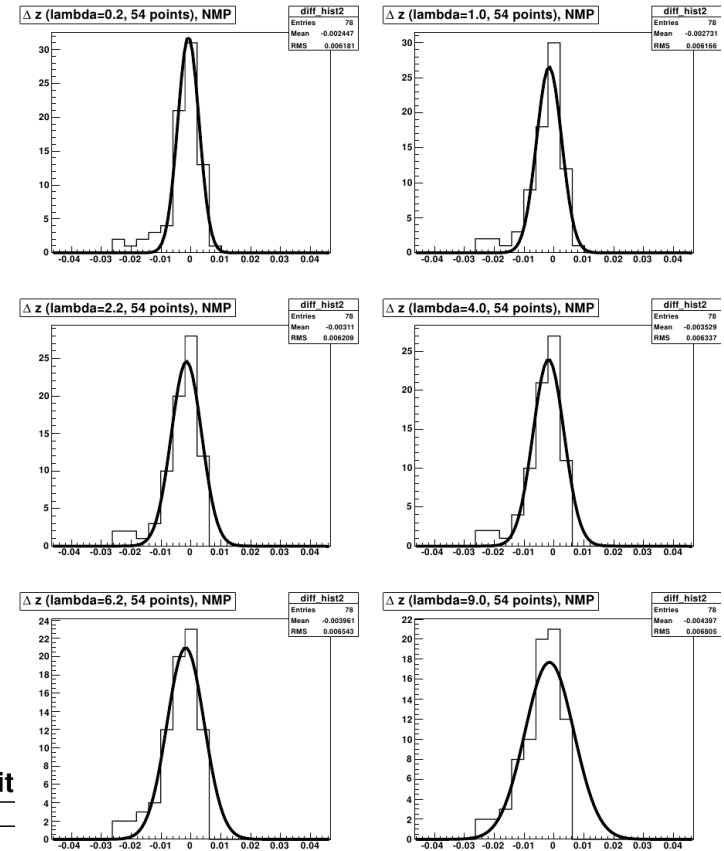
tps fit

3-sensor ladder: difference from the plane

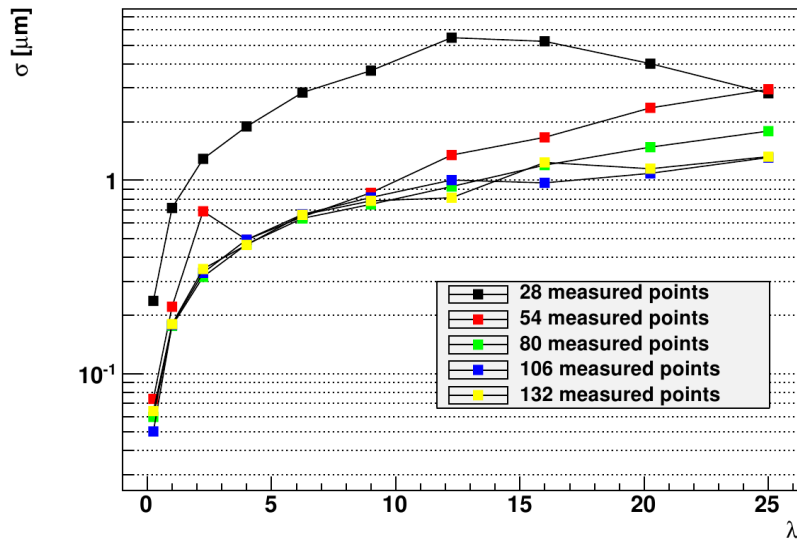


TPS - lambda param.

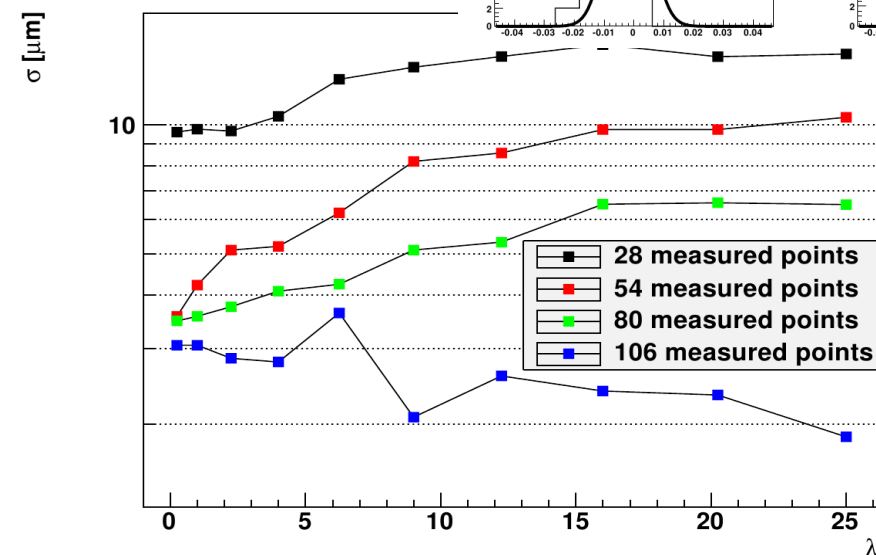
- controls how much the fit can deviate from the measured values used for the fit
- setting $\lambda > 0$ does not improve the results



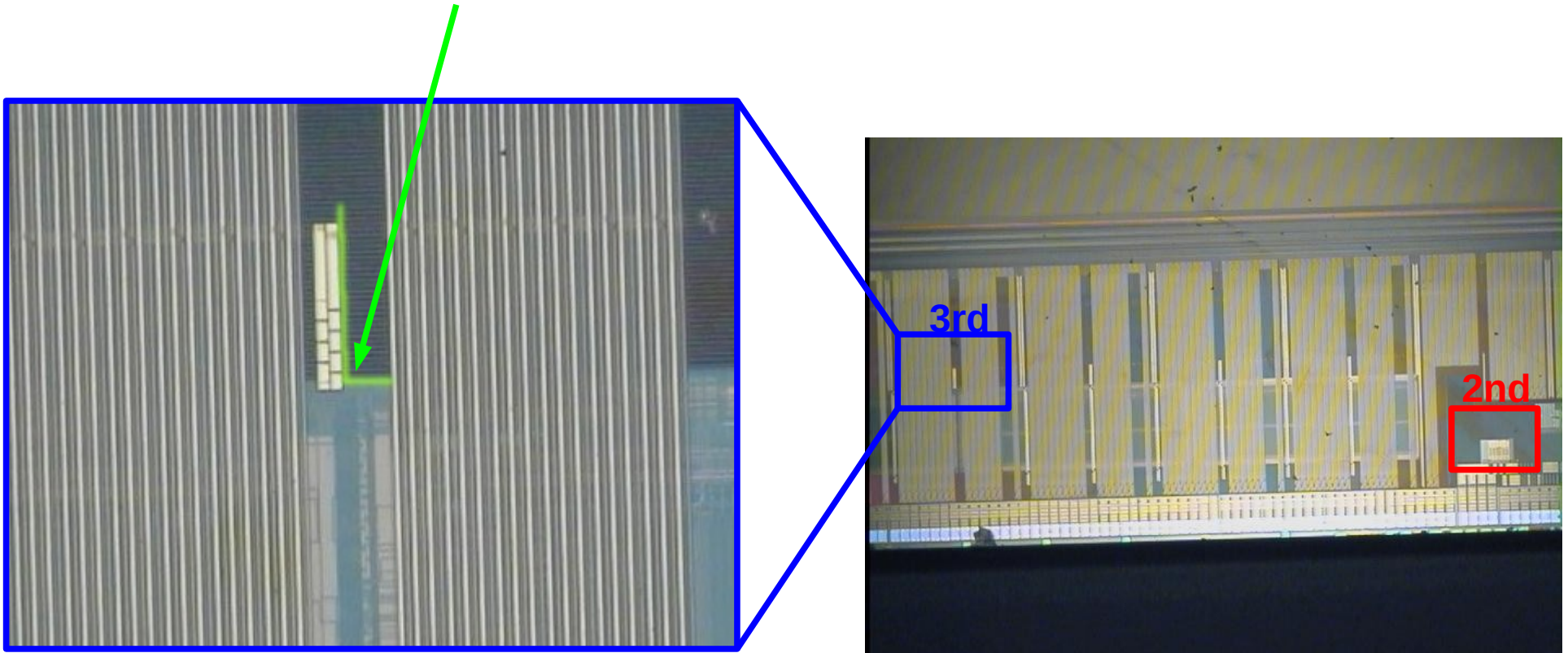
Δz in points used for the fit



Δz in points not used for the fit



3rd feature:



With 200x zoom, feature finder has sometimes difficulties to recognize it...